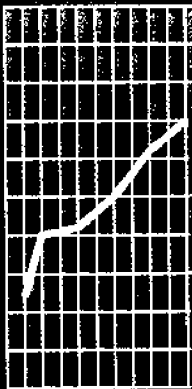




April 1996

Monthly Summary of Statistics Western Australia



ABS Catalogue No. 1305.5



**AUSTRALIAN BUREAU OF STATISTICS
WESTERN AUSTRALIA
APRIL 1996 RELEASES**

Catalogue

<i>Number</i>	<i>Publication Title</i>	<i>Release Date</i>
8731.5	Building Approvals, Western Australia, February 1996	1 April 1996
8741.5	Dwelling Unit Commencements, Western Australia, January 1996	2 April 1996
3204.5	Estimated Resident Population, Preliminary, Statistical Local Area, Western Australia	4 April 1996
1305.5	Monthly Summary of Statistics, Western Australia, April 1996	30 April 1996
6410.5	Price Index of Western Australian Hardwoods, Western Australia, March 1996	30 April 1996

SYMBOLS AND OTHER USAGES

The following symbols, where shown in columns of figures or elsewhere in tables, mean:

- n.a. not available
- n.e.i. not elsewhere included
- n.p. not available for separate publication (but included in totals where applicable)
- n.y.a. not yet available
- nil or rounded to zero
- .. not applicable
- * Subject to sampling variability too high for most practical purposes.
- p preliminary - figure or series subject to revision
- r figure or series revised since previous issue
- break in continuity of series (where drawn between two consecutive figures or columns)

ROUNDING FIGURES

Where figures have been rounded, discrepancies may occur between sums of the component items and totals.

**P.C.Kelly
Deputy Commonwealth Statistician
and Government Statistician
for Western Australia**

CONTENTS

	<i>Table</i>	<i>Page</i>
POPULATION	1.1 Estimated Resident Population	1
	1.2 Components of Population Change	2
	1.3 Registrations of Births, Deaths, Marriages and Divorces	3
	1.4 Rates of Birth, Deaths, Marriages and Divorces	3
TOURISM	2.1 Permanent and Long Term Arrivals and Departures	4
	2.2 Short Term Overseas Arrivals and Departures	5
	2.3 Short Term Arrivals by Air: Last Six Months	5
	2.4 Short Term Arrivals: Purpose of Journey	6
	2.5 Short Term Departures: Last Six Quarters	7
	2.6 Short Term Departures: Purpose of Journey	8
	2.7 Tourist Accommodation	9
EMPLOYMENT	3.1 Labour Force Status: Seasonally Adjusted	10
	3.2 Labour Force Status: Trends	11
	3.3 Employed Wage and Salary Earners by Industry and Sector	12
	3.4 Average Weekly Earnings of Employees	13
	3.5 Industrial Disputes Causing Stoppage at Work	14
RETAIL	4.1 Monthly Retail Turnover: Original Estimates	15
	4.2 Consumer Price Index: Perth	16
CONSTRUCTION	5.1 New Residential Building Approved	17
	5.2 New Non-Residential Building Approved	18
	5.3 Selected Housing Price Indexes: Perth	19
	5.4 Price Indexes of Materials Used in Building Other Than House Building: Perth	20
PRODUCTION	6.1 Livestock Slaughtered	21
	6.2 Meat Produced	21
	6.3 Wool Receivals	22
	6.4 Energy Production	22
	6.5 Mineral Exploration: Expenditure by Type of Mineral Sought	23
	6.6 Mineral Production	23
OVERSEAS TRADE	7.1 Imports by Selected Divisions	24
	7.2 Exports by Selected Divisions	25
TRANSPORT	8.1 Vehicle Registration Statistics	26
	8.2 New Motor Vehicle Registrations	26
FINANCE	9.1 Private New Capital Expenditure by Selected Industry Groups	27
	9.2 State Final Demand and Production Account	27
STATISTICAL SUMMARY	10.1 Key State Indicators	28

INQUIRIES

- PHONE ■ For more information about these statistics and of related unpublished statistics, contact Information Services on (09) 360 5140
- MAIL ■ Write to or visit Information Services, Bureau of Statistics,
Level 16, Exchange Plaza Building, 2 The Esplanade, Perth WA 6000
- ELECTRONIC ■ On Elderlink key *620#
■ On Dial-A-Statistic phone 0055 86 400
-

Analysis of Table 1.1

The mean population for 1994-95 increased by 27,700 over the previous year. This compares with an increase of 21,100 between 1992-93 and 1993-94.

The mean population for the 1994 calendar year increased by 25,300. This figure was higher than the 1993 increase of 19,200.

In the June quarter 1995, Western Australia's population grew by 7,500 persons to 1,731,700. This was an increase of 30,600 persons since the 1994 June quarter.

1.1 ESTIMATED RESIDENT POPULATION

Period	At end of period		Persons ¹	Mean Population
	Males	Females		
	000			
Financial years				
1992-93	842.4	833.9	1 676.3	1 667.4
1993-94p	854.6	846.4	1 701.1	1 688.5
1994-95p	869.7	862.0	1 731.7	1 716.2
Calendar years				
1992	837.7	829.1	1 666.7	1 657.9
1993	847.9	839.5	1 687.4	1 677.1
1994 p	861.1	853.3	1 714.4	1 702.4
Quarters				
Mar 94	851.7	843.5	1 695.3	..
Jun 94	854.6	846.4	1 701.1	..
Sep 94 p	858.5	850.5	1 709.0	..
Dec 94 p	861.1	853.3	1 714.4	..
Mar 95 p	866.1	858.2	1 724.2	..
Jun 95 p	869.7	862.0	1 731.7	..

¹ All estimates have been finalised using 1991 Census results
Reference: Australian Demographic Statistics (3101.0)

Analysis of Table 1.2

In the June quarter 1995 the total increase in population was 7,500. The total increase for the 1994-95 year of 30,700 is higher than for any financial year since 1989-90. Between March and June 1995 quarters, all three components of population change decreased.

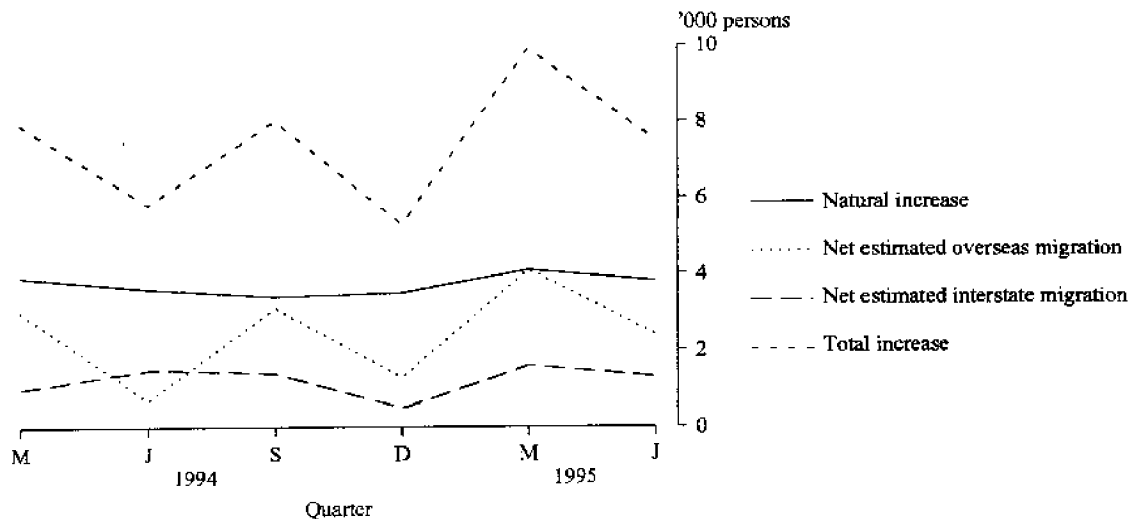
There was no change in the natural increase between 1993 and 1994.

However, net estimated overseas migration jumped from 5,500 in 1993 to 8,100 in 1994, and net estimated interstate migration increased from 600 to 4,500 persons.

1.2 COMPONENTS OF POPULATION CHANGE

Period	Natural increase	Net estimated overseas migration ¹	Net estimated interstate migration	Total increase
(000)				
Financial years				
1992-93	14.7	4.6	-0.3	19.0
1993-94	14.3	6.7	3.7	24.7
1994-95 p	14.8	11.0	4.9	30.7
Calendar years				
1992	14.9	5.7	-0.8	19.8
1993	14.4	5.5	0.6	20.5
1994 p	14.4	8.1	4.5	26.9
Quarters				
Mar 94	3.9	3.0	1.0	7.9
Jun 94	3.6	0.7	1.5	5.8
Sep 94 p	3.4	3.1	1.4	8.0
Dec 94 p	3.5	1.3	0.5	5.3
Mar 95 p	4.1	4.1	1.6	9.9
Jun 95 p	3.8	2.4	1.3	7.5

¹ Includes an adjustment for 'category jumping'
Reference: Australian Demographic Statistics (3101.0)

COMPONENTS OF POPULATION CHANGE
WESTERN AUSTRALIA

Analysis of Table 1.3

There was a rise of 320 deaths in September quarter 1995 from June quarter 1995. However, the number of marriages dropped sharply by 843 from June quarter 1995, repeating the pattern that occurred in 1994.

The number of live births and infant deaths in September quarter 1995 were similar to the previous quarter whilst divorces rose slightly to reflect a figure very similar to September quarter 1994.

1.3 REGISTRATION OF BIRTHS, DEATHS, MARRIAGES AND DIVORCES

Period	Live births	Infant deaths	Total deaths	Marriages	Divorces
Financial years					
1992-93	25 080	147	9 998	10 214	4 385
1993-94	25 309	148	10 522	10 316	4 934
1994-95 p	25 018	137	10 261	10 381	4 930
Calendar years					
1992	25 051	171	9 902	10 118	4 540
1993	25 079	143	10 318	10 382	4 654
1994 r	25 124	137	10 295	10 366	5 024
Quarters					
Jun 94	6 446	39	2 519	2 486	1 283
Sep 94	6 257	38	2 812	1 462	1 333
Dec 94	6 000	29	2 537	3 305	1 358
Mar 95 p	6 412	37	2 314	3 247	1 081
Jun 95 p	6 349	33	2 598	2 367	1 158
Sep 95 p	6 311	29	2 918	1 524	1 332

Reference: Australian Demographic Statistics (3101.0)

Analysis of Table 1.4

Rates for marriages in September quarter 1995 dropped sharply from June quarter 1995, reflecting the corresponding fall in the number of marriages as occurred in 1994.

The rates for live births and infant deaths dropped slightly in September quarter 1995 from June quarter, but increased slightly for deaths reflecting the higher number of deaths.

The divorce rate for September quarter 1995 rose more highly from the preceding quarter than it did in 1994, but was still below the 1994 figure.

For more information regarding tables on Vital statistics and Overseas Arrivals and Departures, please contact Mike Joske on (09) 360 5276

1.4 RATES OF BIRTHS, DEATHS, MARRIAGES AND DIVORCES

Period	Live births ¹	Infant deaths ²	Total deaths ¹	Marriages ¹	Divorces ¹
Financial years					
1992-93	15.04	5.86	5.99	6.13	2.63
1993-94	14.99	5.85	6.23	6.11	2.92
1994-95 p	14.58	5.48	5.98	6.05	2.87
Calendar years					
1992	15.11	6.83	5.97	6.10	2.74
1993	14.95	5.70	6.15	6.19	2.78
1994 p	14.76	5.45	6.05	6.09	2.95
Quarters					
Jun 94	15.18	6.05	5.93	5.86	3.02
Sep 94	14.68	6.07	6.60	3.43	3.13
Dec 94	14.02	4.83	5.93	7.72	3.17
Mar 95 p	14.92	5.77	5.38	7.55	2.51
Jun 95 p	14.70	5.20	6.01	5.48	2.68
Sep 95 p	14.54	4.60	6.72	3.51	3.07

¹ For financial and calendar years the rate is per '000 mean resident population. For quarters, the mean is averaged between the previous and current quarterly population.

² Infant deaths per 1,000 live births.

Reference: Australian Demographic Statistics (3101.0)

2.1 PERMANENT AND LONG TERM ARRIVALS AND DEPARTURES

Analysis of Table 2.1

In December quarter 1995 there were 7,360 long term and permanent arrivals, an increase of 8% compared with December quarter 1994. Long term and permanent departures increased 7% compared with the same period in 1994.

There were 3,140 permanent settler arrivals to Western Australia in December quarter 1995. This is an increase of 420 arrivals or 15% compared with the same quarter last year. This follows on a 16% increase for September quarter 1995 compared with September quarter 1994.

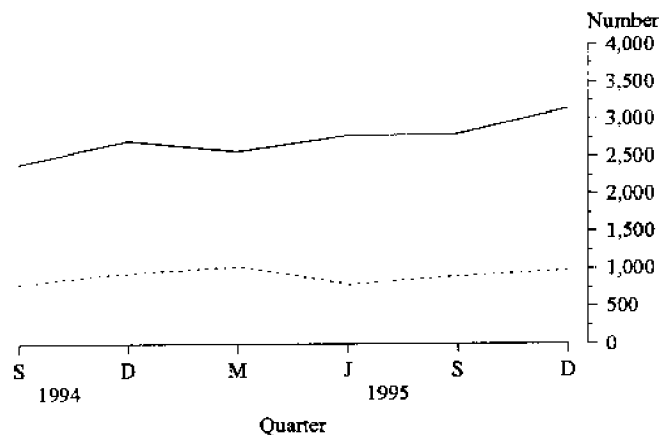
The number of long term overseas visitor arrivals (visitors who intend to stay for longer than 12 months) for December quarter 1995 fell by 1,200 or 45% from the previous quarter. This repeated the pattern of decline for the same quarters in 1994.

The total of 7,360 permanent and long term arrivals in December quarter 1995 exceeded departures by 2,780 or 61%.

Period	Permanent movement	LONG TERM MOVEMENT		Total movement
		Australian residents	Overseas visitors	
ARRIVALS				
Financial years				
1992-93	7 930	8 260	6 090	22 280
1993-94	7 740	8 900	7 430	24 070
1994-95	10 380	9 070	8 470	27 920
Quarters				
Sep 94	2 410	2 120	2 080	6 610
Dec 94	2 720	2 950	1 160	6 830
Mar 95	2 570	2 210	3 910	8 700
Jun 95	2 780	1 790	1 310	5 880
Sep 95	2 800	1 980	2 640	7 420
Dec 95	3 140	2 780	1 440	7 360
DEPARTURES				
Financial years				
1992-93	3 410	7 180	3 680	14 260
1993-94	3 430	7 340	4 140	14 900
1994-95	3 580	7 560	4 710	15 860
Quarters				
Sep 94	800	1 750	880	3 430
Dec 94	950	1 590	1 730	4 270
Mar 95	1 040	2 390	1 070	4 500
Jun 95	790	1 830	1 030	3 650
Sep 95	900	1 760	1 130	3 790
Dec 95	990	1 610	1 980	4 580

Reference: Unpublished table PMTR0001

PERMANENT SETTLER ARRIVALS AND PERMANENT DEPARTURES
WESTERN AUSTRALIA : LAST SIX QUARTERS



Source: Unpublished Table PMTR001

— Arrivals
..... Departures

Analysis of Table 2.2

Short term overseas visitor arrivals for December quarter 1995 increased by 4,600 or 4% compared with the same quarter last year. This follows on a 1% increase for September quarter 1995 compared with September quarter 1994. There was an expected rise of 36,800 or 50% from September quarter 1995.

The number of Australian residents departing on short term overseas journeys in the December quarter 1995 fell by 1,600 or 2% from September quarter 1995. However, it represented an increase of 4,300 or 6% from December quarter 1994.

December quarter 1995, which includes the Christmas holidays, had the highest number of short term arrivals and departures in all the six quarters listed.

2.2 SHORT TERM OVERSEAS ARRIVALS AND DEPARTURES

Period	Australian residents	Overseas visitors	Total
ARRIVALS			
Financial years			
1992-93	261 600	234 000	495 600
1993-94	269 900	297 700	567 600
1994-95	289 200	339 700	628 900
Quarters			
Sep 94	82 300	73 600	155 900
Dec 94	72 300	106 200	178 500
Mar 95	75 900	85 600	161 500
Jun 95	58 700	74 200	132 900
Sep 95	83 500	74 000	157 500
Dec 95	76 500	110 800	187 300
DEPARTURES			
Financial years			
1992-93	269 800	232 500	502 300
1993-94	274 800	290 500	565 300
1994-95	292 300	343 600	635 900
Quarters			
Sep 94	84 200	71 600	155 800
Dec 94	76 900	92 800	169 700
Mar 95	60 500	96 900	157 400
Jun 95	70 600	82 200	152 800
Sep 95	82 800	72 000	154 800
Dec 95	81 200	96 200	177 400

Reference: Unpublished table PMTR0001

Analysis of Table 2.3

Short term overseas arrivals by air for December quarter 1995 (109,900) were up by 3,900 or 4% compared with December 1994. There was a rise of 36,100 arrivals from September quarter 1995 with the United Kingdom and Ireland recording the biggest increase of 11,300 or 120%. Singapore recorded an increase of 10,400 or 92%.

The major source countries were Singapore (with 20%), the United Kingdom and Ireland (19%), Indonesia (13%), Malaysia 7% and Japan with 6%.

During December quarter 1995, 54% of all short term arrivals by air were from Asia.

2.3 SHORT TERM OVERSEAS ARRIVALS BY AIR¹

Country of residence	Sep 1994	Dec 1994	Mar 1995	Jun 1995	Sep 1995	Dec 1995
('000)						
Asia						
Indonesia	8.9	13.1	12.3	9.9	9.9	14.1
Japan	8.4	7.4	7.9	5.2	9.4	6.8
Malaysia	6.9	7.9	7.4	7.9	6.2	7.9
Singapore	10.9	21.4	10.9	16.4	11.3	21.7
Thailand	2.5	2.5	1.6	3.1	2.1	3.4
Other Asia	4.5	3.8	4.7	4.4	4.9	5.8
Total Asia	42.1	56.1	44.8	46.8	43.7	59.7
Other						
Germany	2.3	4.4	3.3	1.9	2.3	4.1
New Zealand	7.5	6.9	4.7	5.2	6.9	6.0
U.K. and Ireland	10.0	21.0	18.9	11.1	9.4	20.7
U.S.A.	2.4	3.5	2.8	2.0	2.4	4.1
Other	9.2	14.1	11.0	7.1	9.1	15.4
Total Other	31.4	49.9	40.7	27.2	30.1	50.3
Total	73.5	106.0	85.5	74.1	73.8	109.9

¹ Comprises travellers whose intended or actual stay is less than twelve months.

Reference: Unpublished table PMTR0031

Analysis of Table 2.4

In December quarter 1995 there were 109,900 short term overseas arrivals by air. Of these, 57% (62,500 persons) gave the reason for their journey as 'holiday', and a further 29% (31,700) said they were 'visiting friends or relatives'.

People on holiday were mainly from Singapore (27%), Indonesia (17%), and the United Kingdom and Ireland (11%).

People visiting friends or relatives were predominantly from the United Kingdom and Ireland (39%), New Zealand (11%), Singapore (9%) and Malaysia (6%).

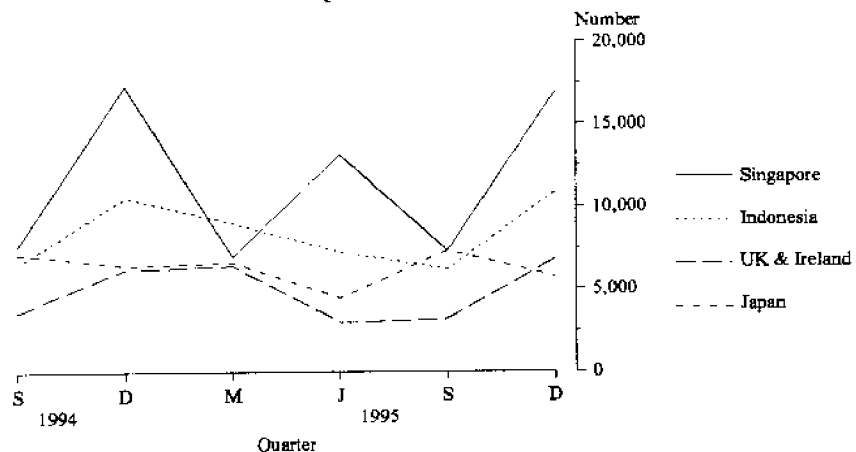
2.4 SHORT TERM OVERSEAS ARRIVALS BY AIR : PURPOSE OF JOURNEY: DECEMBER QUARTER 1995

Country of residence	Convention/ business ¹	Visiting friends/ relatives	Holiday	Employment and education	Other and not stated	Total this quarter
('000)						
Asia						
Indonesia	0.9	1.0	10.9	0.6	0.7	14.1
Japan	0.5	0.2	5.7	0.2	0.2	6.8
Malaysia	0.6	1.9	4.9	0.4	0.2	7.9
Singapore	0.9	2.9	17.0	0.5	0.5	21.7
Thailand	0.3	0.3	2.7	0.1	0.1	3.4
Other Asia	1.1	1.7	1.9	0.5	0.3	5.8
Total Asia	4.3	8.0	43.1	2.3	2.0	59.7
Other						
Germany	0.2	0.8	2.9	—	0.1	4.1
New Zealand	0.6	3.6	1.3	0.2	0.4	6.0
U.K. and Ireland	0.8	12.4	6.8	0.3	0.4	20.7
U.S.A.	1.2	1.6	1.1	0.2	—	4.1
Other	2.0	5.3	7.3	0.2	0.6	15.4
Total Other	4.8	23.7	19.4	0.9	1.5	50.3
Total	9.1	31.7	62.5	3.2	3.5	109.9

¹ From September 1994 includes convention, conference and business.

Reference: Unpublished table PMTR0031

SHORT TERM OVERSEAS ARRIVALS BY AIR:
FOR HOLIDAYS IN WESTERN AUSTRALIA
LAST SIX QUARTERS



Source: Unpublished Table: PMTR0031

Analysis of Table 2.5

In December quarter 1995 there were 81,100 short term resident departures by air, a rise of 4,300 or 6% from December quarter 1994. However, this figure represents a drop of 1,500 people or 2% from the preceding September quarter 1995.

For residents departing overseas, the three most popular destinations were Indonesia, selected by 21% of residents and Singapore and the United Kingdom and Ireland with 11% each.

Other common destinations were New Zealand (10%), Malaysia (8%) and the United States of America with 6%.

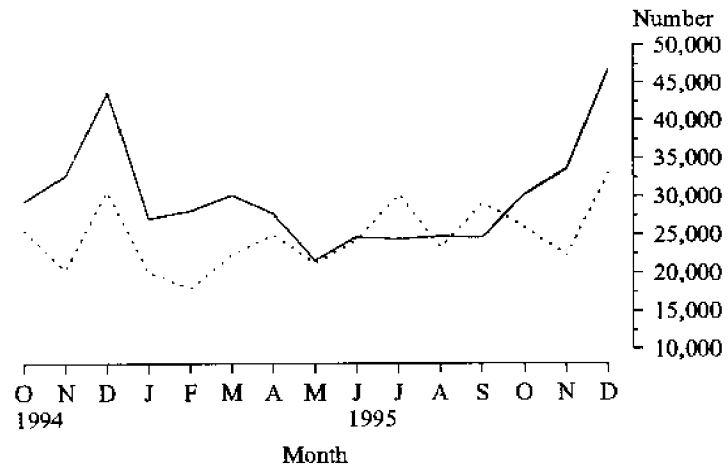
2.5 SHORT TERM OVERSEAS RESIDENT DEPARTURES BY AIR

Country departing to	Sep 1994	Dec 1994	Mar 1995	Jun 1995	Sep 1995	Dec 1995
	('000)					
Asia						
Hong Kong	3.1	2.6	2.5	2.7	2.4	3.3
Indonesia ¹	21.0	19.4	14.0	13.8	19.8	17.1
Japan	0.9	0.9	0.7	0.7	0.4	0.7
Malaysia	6.5	6.5	5.0	5.1	6.8	6.7
Singapore	7.7	6.9	6.0	5.2	7.5	8.9
Thailand	4.7	4.1	3.2	3.5	5.9	3.2
Other Asia	3.8	5.9	4.9	4.2	4.3	7.6
Total Asia	47.8	46.3	36.3	35.1	47.0	47.5
Other						
Germany	0.8	0.7	0.7	0.9	0.4	0.8
Italy	1.5	0.8	0.6	1.2	1.3	1.2
New Zealand	6.5	7.6	7.3	4.4	6.0	8.2
U.K. and Ireland	13.3	8.1	6.2	13.2	13.4	8.7
U.S.A.	4.9	4.8	3.4	5.5	5.6	4.7
Other	9.2	8.4	5.8	10.4	9.0	10.0
Total Other	36.2	30.4	24.0	35.4	35.7	33.6
Total	84.1	76.8	60.3	70.6	82.6	81.1

¹ Includes Bali.

Reference: Unpublished table PMTR0031

TOTAL SHORT TERM ARRIVALS OF OVERSEAS VISITORS AND DEPARTURES OF WESTERN AUSTRALIAN RESIDENTS BY MONTH



Source: Unpublished table PMTR0013

— Arrivals

- - - - - Departures

Analysis of Table 2.6

The main reasons given for short term resident departures by air in December quarter 1995 were 'holiday' (51%), 'visiting friends or relatives' (28%), and attending 'convention or conference' or 'on business' (15%).

The most popular destinations for residents departing on holiday were Indonesia (33%), and Singapore (12%).

Of those residents departing to visit friends or relatives overseas, 20% went to the United Kingdom and Ireland and a further 17% went to New Zealand.

2.6 SHORT TERM OVERSEAS RESIDENT DEPARTURES BY AIR: PURPOSE OF JOURNEY: DECEMBER QUARTER 1995

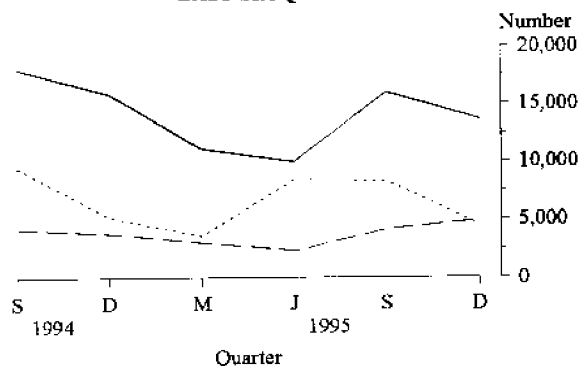
Country of residence	Convention/ business ¹	Visiting friends/ relatives	Holiday	Employment and education	Other and not stated	Total this quarter
Asia						
Hong Kong	0.9	0.9	1.2	0.1	0.1	3.3
Indonesia ²	2.0	0.7	13.7	0.4	0.3	17.1
Japan	0.2	0.2	0.1	0.1	0.1	0.7
Malaysia	1.1	1.6	3.5	0.1	0.3	6.7
Singapore	1.5	2.1	5.0	0.2	0.1	8.9
Thailand	0.2	0.5	2.3	0.2	—	3.2
Other Asia	1.9	2.8	2.6	0.4	0.2	7.6
Total Asia	7.8	8.8	28.4	1.5	1.1	47.5
Other						
Germany	0.1	0.4	0.3	0.1	—	0.8
Italy	0.2	0.6	0.5	0.1	—	1.2
New Zealand	0.8	3.9	3.1	0.1	0.3	8.2
U.K. and Ireland	0.7	4.5	2.7	0.4	0.4	8.7
U.S.A.	1.0	1.0	2.5	—	0.2	4.7
Other	1.8	3.4	3.7	0.3	0.8	9.9
Total Other	4.6	13.8	12.8	1.0	1.7	33.5
Total	12.3	22.5	41.1	2.4	2.7	81.1

¹ From September 1994 includes convention, conference and business.

² Includes Bali

Reference: Unpublished table PMTR0031

SHORT TERM OVERSEAS RESIDENT DEPARTURES BY AIR: PURPOSE OF JOURNEY: HOLIDAY LAST SIX QUARTERS



Source: Unpublished Table PMTR0031

— Indonesia
 ... Europe
 - - Singapore

2.7 TOURIST ACCOMMODATION

Period	Hotels, Motels, Guest Houses with facilities			Caravan parks		
	Guest rooms	Room occupancy rates	Guest arrivals	Number of sites	Site occupancy rates	Guest arrivals
	Number	%	'000	Number	%	'000
Financial years						
1991-92	14 624 ¹	52	1 934.7	28 174 ¹	32	1 260
1992-93	14 577 ¹	53	1 965.2	28 308 ¹	38	1 194
1993-94	14 754 ¹	57	2 153.8	29 202 ¹	39	1 250
Months						
Oct 94		68	218		39	107
Nov 94		62	180		35	68
Dec 94	14 734	54	182	29 625	37	100
Jan 95		58	192		45	135
Feb 95		60	156		38	70
Mar 95	14 742	60	178	29 480	37	80
Apr 95		59	182		41	116
May 95		57	173		36	79
Jun 95	14 754	57	166	29 554	40	100
Jul 95		55	178		45	140
Aug 95		61	193		44	138
Sep 95	14 720	68	218	29 828	43	135
Oct 95		63	240		39	112
Nov 95		59	194		35	72
Dec 95	14 924	51	197	30 063	38	105
Period	Holiday Flats, Units, Houses			Visitor Hostels		
	Guest Units	Unit occupancy rates	Unit lettings	Bed Spaces	Bed occupancy rates	Bed-nights sold
	Number	%	'000	Number	%	'000
Financial years						
1991-92	1 895 ¹	53	91	2 683 ¹	34	323
1992-93	1 993 ¹	52	86	3 112 ¹	36	386
1993-94	2 224 ¹	55	96	3 119 ¹	38	416
Months						
Oct 94		66	10		39	34
Nov 94		55	9		41	35
Dec 94	2 302	60	10	2 858	42	37
Jan 95		73	10		46	39
Feb 95		58	8		45	35
Mar 95	2 414	56	10	2 794	43	37
Apr 95		63	10		48	40
May 95		45	8		41	36
Jun 95	2 419	45	8	2 834	41	35
Jul 95		56	11		43	37
Aug 95		48	9		38	34
Sep 95	2 439	58	12	2 831	41	35
Oct 95		66	13		44	41
Nov 95		55	11		42	38
Dec 95	2 581	61	12	3 033	43	40

¹ Number at 30 June.

Reference: Tourist Accommodation, Western Australia (8635.5)

For more information regarding this table, please contact Pam Prince on (09) 360 5932

Analysis of Table 3.1

The seasonally adjusted unemployment rate decreased 0.2 percentage points to 7.7 per cent in March 1996. The trend estimate of the unemployment rate increased 0.1 percentage point.

The seasonally adjusted number of persons unemployed decreased by 2,200 to 69,700, while the number of persons employed decreased by 1,800 to 833,100.

Western Australia's seasonally adjusted participation rate for March 1996 decreased by 0.4 of a percentage point to 66.2% and continues to be the highest of all the states.

Trend estimates for September 1995 to February 1996 have been revised.

3.1 LABOUR FORCE STATUS (AGED 15 YEARS AND OVER): SEASONALLY ADJUSTED SERIES

Month	Employed full-time	Total employed	Total unemployed	Unemployment rate	Participation rate
	000	000	000	%	%
Males					
May 95	425.9	476.3	38.1	7.4	77.2
Jun 95	428.8	477.3	36.4	7.1	77.0
Jul 95	430.5	478.7	34.7	6.8	76.8
Aug 95	427.0	475.7	34.8	6.8	76.2
Sep 95	430.8	478.0	37.1	7.2	76.8
Oct 95	429.5	478.5	36.8	7.1	76.7
Nov 95	429.6	479.6	37.4	7.2	76.8
Dec 95	425.2	477.2	38.2	7.4	76.4
Jan 96	424.9	476.0	40.9	7.9	76.5
Feb 96	428.5	475.8	42.4	8.2	76.5
Mar 96	426.9	477.9	42.6	8.2	76.7
Females					
May 95	193.0	357.2	27.7	7.2	57.3
Jun 95	187.2	351.7	28.8	7.6	56.5
Jul 95	186.0	352.4	32.5	8.4	57.1
Aug 95	192.7	355.4	27.7	7.2	56.7
Sep 95	191.0	350.7	30.2	7.9	56.3
Oct 95	187.8	351.5	29.1	7.6	56.1
Nov 95	189.4	352.7	31.3	8.1	56.5
Dec 95	185.2	349.9	29.6	7.8	55.8
Jan 96	185.2	346.2	29.7	7.9	55.1
Feb 96	194.3	359.1	29.6	7.6	56.9
Mar 96	194.9	355.1	27.1	7.1	55.8
Persons					
May 95	618.9	833.5	65.8	7.3	67.2
Jun 95	616.0	829.0	65.2	7.3	66.7
Jul 95	616.5	831.1	67.2	7.5	66.9
Aug 95	619.7	831.2	62.6	7.0	66.4
Sep 95	621.8	828.6	67.3	7.5	66.5
Oct 95	617.4	830.0	65.9	7.4	66.3
Nov 95	618.9	832.3	68.6	7.6	66.6
Dec 95	610.5	827.1	67.8	7.6	66.0
Jan 96	610.1	822.2	70.6	7.9	65.7
Feb 96	622.8	834.9	71.9	7.9	66.7
Mar 96	621.8	833.1	69.7	7.7	66.2

Reference: The Labour Force, Australia (6202.0)

Analysis of Table 3.2

3.2 LABOUR FORCE STATUS (AGED 15 YEARS AND OVER): TREND SERIES

For more information regarding these tables, please contact Renae Gibson on (09) 360 5332.

Month	Employed full-time	Total employed	Total unemployed	Unemployment rate	Participation rate
	'000	'000	'000	%	%
Males					
May 95	426.5	476.7	38.0	7.4	77.3
Jun 95	428.0	477.4	36.7	7.1	77.0
Jul 95	429.2	477.8	35.8	7.0	76.8
Aug 95	429.6	477.9	35.6	6.9	76.7
Sep 95r	429.5	478.0	35.9	7.0	76.6
Oct 95r	428.9	478.0	36.7	7.1	76.6
Nov 95	428.1	477.8	37.9	7.3	76.6
Dec 95r	427.4	477.5	39.1	7.6	76.6
Jan 96r	426.9	477.2	40.3	7.8	76.6
Feb 96r	426.6	476.9	41.4	8.0	76.5
Mar 96	426.3	476.6	42.4	8.2	76.5
Females					
May 95	191.2	354.4	27.8	7.3	56.9
Jun 95	190.8	354.4	28.6	7.5	56.9
Jul 95r	190.2	354.0	29.3	7.7	56.8
Aug 95	189.5	353.0	29.8	7.8	56.6
Sep 95r	188.8	352.0	30.1	7.9	56.4
Oct 95r	188.3	351.3	30.1	7.9	56.2
Nov 95r	188.2	351.1	30.0	7.9	56.1
Dec 95r	188.5	351.4	29.8	7.8	56.0
Jan 96r	189.2	352.1	29.5	7.7	56.0
Feb 96r	190.4	353.1	29.1	7.6	55.9
Mar 96	191.9	354.3	28.6	7.5	55.9
Persons					
May 95	617.6	831.1	65.9	7.3	67.0
Jun 95	618.8	831.8	65.4	7.3	66.9
Jul 95r	619.4	831.7	65.2	7.3	66.8
Aug 95	619.1	831.0	65.4	7.3	66.6
Sep 95r	618.3	829.9	66.0	7.4	66.5
Oct 95 r	617.2	829.2	66.8	7.5	66.3
Nov 95r	616.3	828.9	67.8	7.6	66.3
Dec 95r	615.9	828.9	68.9	7.7	66.2
Jan 96r	616.2	829.3	69.8	7.8	66.2
Feb 96r	617.0	830.0	70.6	7.8	66.2
Mar 96	618.2	830.9	70.9	7.9	66.2

Reference: The Labour Force, Australia (6202.0)

Analysis of Table 3.3

The total number of employees rose from 550,500 in March 1994 to 558,800 in March 1995. During this twelve month period, the public sector total number of employees rose by 3,600 to 157,600, and the private sector total number of employees showed an increase of 4,800 to 401,300.

3.3 NUMBER OF EMPLOYED WAGE AND SALARY EARNERS BY INDUSTRY AND SECTOR

Particulars	Number of Employees				Gross earnings
	Mar 1994	Sept 1994	Dec 1994	Mar 1995	Mar quarter 1995
	000	000	000	000	\$m
INDUSTRY					
Mining	20.6	20.7	21.5	23.8	323.5
Manufacturing	58.5	59.7	57.0	56.7	449.9
Electricity, gas and water	8.7	8.4	8.2	8.0	69.1
Construction	28.3	26.0	26.3	28.0	246.6
Wholesale trade	39.9	38.9	38.1	40.0	301.0
Retail trade	78.8	81.8	82.5	80.9	334.9
Transport and storage	22.3	22.2	21.8	21.7	204.5
Communication	8.2	8.5	8.7	8.8	79.4
Finance, property and business	60.8	63.4	66.3	64.2	493.9
Public administration and defence	29.5	29.9	31.7	30.1	226.5
Community services	144.9	149.1	151.1	152.3	970.9
Recreation, personal and other services	48.4	42.3	44.1	42.8	193.9
Total all industries¹	550.5	552.2	558.8	558.8	3 906.2
SECTOR					
Private	396.5	398.9	398.8	401.3	2 692.4
Government					
Commonwealth	22.0	21.5	22.1	22.3	198.6
State	118.7	118.5	125.3	122.7	937.0
Local	13.3	13.3	12.7	12.6	78.3
Total Government	154.0	153.2	160.1	157.6	1 213.8
Total all sectors	550.5	552.2	558.8	558.8	3 906.2

Particulars	FEBRUARY 1994			FEBRUARY 1995		
	Males	Females	Persons	Males	Females	Persons
INDUSTRY						
Mining	18.4	2.9	21.3	20.6	3.4	24.0
Manufacturing	46.2	13.7	59.9	44.0	13.2	57.2
Electricity, gas and water	7.8	0.9	8.8	7.0	1.0	8.0
Construction	22.9	5.6	28.5	23.1	4.1	27.2
Wholesale trade	28.1	11.7	39.8	27.5	12.9	40.4
Retail trade	33.0	44.1	77.1	33.4	46.5	80.0
Transport and storage	17.9	4.4	22.3	16.1	5.6	21.7
Communication	5.8	2.4	8.3	6.0	2.7	8.8
Finance, property and business	28.6	32.7	61.2	29.4	34.3	63.7
Public administration and defence	17.9	11.6	29.5	17.7	12.4	30.1
Community services	49.3	92.6	141.9	43.8	101.2	145.0
Recreation, personal and other services	19.7	26.6	46.3	18.1	24.9	43.0
Total all industries¹	296.9	249.7	546.5	287.9	262.6	550.5
SECTOR						
Private	218.2	175.5	393.8	211.8	187.8	399.6
Government						
Commonwealth	13.8	9.0	22.8	13.1	9.1	22.2
State	56.4	60.2	116.6	55.3	61.0	116.2
Local	8.4	4.8	13.3	7.8	4.7	12.5
Total Government	78.6	74.1	152.7	76.1	74.8	150.9
Total all sectors	296.9	249.7	546.5	287.9	262.6	550.5

¹ Includes employees of government agencies classified to Agriculture, forestry, fishing and hunting.

Reference: Employed Wage and Salary Earners (9248.0)

Analysis of Table 3.4

3.4 AVERAGE WEEKLY EARNINGS OF EMPLOYEES

Over the past twelve months to November 1995, Western Australian average weekly total earnings for full-time adult persons increased by 5.4% compared with 4.7% for Australia.

Western Australian average weekly total earnings for full-time adult persons in November 1995 were \$713.10, while the comparable Australian average earnings in November 1995 were \$702.90.

Reference period	MALES		
	Full Time Adults		All Males Total earnings
	Ordinary time earnings	Total earnings	
	(dollars)		
19 Aug 94	682.30	734.70	643.80
18 Nov 94	692.40	758.00	663.70
17 Feb 95	695.50	758.60	655.20
19 May 95	701.80	764.20	656.60
18 Aug 95	716.80	776.20	677.00
17 Nov 95	730.00	792.20	682.70

Reference period	FEMALES		
	Full Time Adults		All Females Total earnings
	Ordinary time earnings	Total earnings	
	(dollars)		
19 Aug 94	515.10	528.10	381.80
18 Nov 94	523.70	538.40	398.50
17 Feb 95	536.90	553.60	405.20
19 May 95	541.80	557.40	403.90
18 Aug 95	555.90	568.70	401.30
17 Nov 95	560.80	574.40	406.50

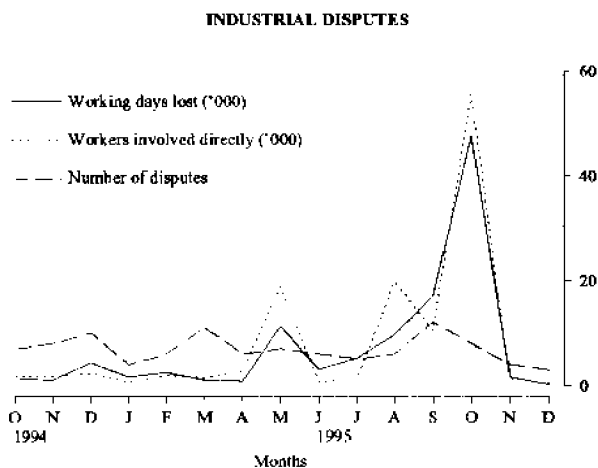
Reference period	PERSONS		
	Full Time Adults		All employees Total earnings
	Ordinary time earnings	Total earnings	
	(dollars)		
19 Aug 94	619.30	656.90	516.20
18 Nov 94	630.10	676.90	538.80
17 Feb 95	637.50	683.60	537.10
19 May 95	645.80	691.90	539.90
18 Aug 95	660.00	702.90	544.40
17 Nov 95	668.50	713.10	548.40

Reference: Average Weekly Earnings, States and Australia, (6302.0)

3.5 INDUSTRIAL DISPUTES CAUSING STOPPAGE OF WORK

Period	Number of disputes	Workers Involved		Total	Working days lost
		Directly	Indirectly		
	Number	'000	'000	'000	'000
Calendar year					
1993	111	27.4	0.2	27.6	29.5
1994	82	15.7	0.2	15.9	27.4
1995	70	99.7	0.0	99.7	101.6
Months					
Oct 94	7	1.7	—	1.7	1.4
Nov 94	8	1.8	—	1.8	1.0
Dec 94	10	2.4	0.1	2.5	4.4
Jan 95	4	0.6	—	0.6	1.6
Feb 95	6	1.9	—	1.9	2.5
Mar 95	11	1.4	—	1.4	1.0
Apr 95	6	2.8	—	2.8	0.8
May 95	7	18.8	—	18.8	11.2
Jun 95	6	0.8	—	0.8	3.1
Jul 95	5	1.1	—	1.1	5.1
Aug 95	6	19.8	—	19.8	9.7
Sep 95	12	10.4	—	10.4	17.0
Oct 95	8	55.5	—	55.5	47.8
Nov 95	4	1.2	—	1.2	1.6
Dec 95	3	0.4	—	0.4	0.2

Reference: Industrial Disputes, Unpublished ABS Data.



Analysis of Table 4.1

Data in this table have been revised and now show data from the redesigned retail Business Survey. see Information Paper (8511.0) issued on 1 December 1994 or Retail Trade Australia (8501.0) for more detail on the survey redesign.

Estimated turnover of Western Australian retail establishments during February 1996 was \$962.1 million (at current prices), a decrease of 6.3% over the previous month. The trend estimates show an increase of 0.3% over the previous month.

From February 1995 to February 1996, trend estimates indicate a national annual growth rate of 8.2%. The annual growth rate for Western Australia for the same period was 10.1%.

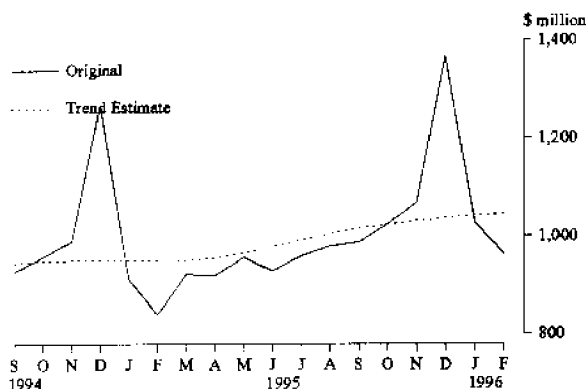
The national trend estimates show increases of 0.5%, 0.5% and 0.4% for the months of December 1995, January and February 1996. For the same three months, Western Australia recorded increases of 0.6%, 0.5% and 0.3% respectively.

4.1 MONTHLY RETAIL TURNOVER : ORIGINAL ESTIMATES

Months	Food	Department stores	Clothing and soft goods stores	Other Household goods	Recreational goods
Feb 95	381.2	68.5	48.6	93.2	41.0
Mar 95	418.6	76.2	54.5	101.9	44.4
Apr 95	404.9	91.9	58.7	96.6	45.2
May 95	407.6	99.7	67.8	111.7	46.5
Jun 95	403.5	91.5	63.6	111.3	43.6
Jul 95	414.4	85.9	60.9	106.3	53.0
Aug 95	431.2	89.0	59.1	105.2	53.1
Sep 95	430.0	84.7	61.1	109.4	52.5
Oct 95	436.2	93.2	64.3	122.3	54.2
Nov 95	452.7	107.4	66.5	129.8	58.9
Dec 95	532.9	182.0	86.3	163.4	88.6
Jan 96	458.9	83.3	59.3	111.5	55.5 r
Feb 96	433.9	74.8	49.5	109.8	50.3

Months	Other	Hospitality and services	Totals		
			Original	Seasonally adjusted	Trend estimates
Feb 95	63.1	144.2	839.8	945.7	948.8
Mar 95	69.0	157.4	922.0	949.2	950.6
Apr 95	66.4	155.4	919.1	953.1	956.1
May 95	73.4	149.2	955.9	966.1	965.8
Jun 95	65.3	149.4	928.2	974.2	978.5
Jul 95	70.6	167.9	959.0	984.8	992.0 r
Aug 95	77.4	163.6	978.6	1026.8	1004.8 r
Sep 95	79.9	169.9	987.5	1006.7	1015.6 r
Oct 95	79.3	174.7	1024.2	1034.0	1024.2
Nov 95	80.7	170.4	1066.4	1015.6	1031.0 r
Dec 95	123.0	191.2	1367.4	1041.8	1037.0 r
Jan 96	84.8	173.7	1027.0	1051.2	1042.2 r
Feb 96	79.6	164.2	962.1	1041.4	1045.1

Reference: Retail Trade, Australia (8501.0)

MONTHLY RETAIL TURNOVER
WESTERN AUSTRALIA

Source: Retail Trade, Australia (8501.0)

Analysis of Table 4.2

The All Groups Consumer Price Index (CPI) Perth increased by 0.6% between the September and December quarters 1995.

Major contributors to the change from the September quarter 1995 to the December quarter 1995 were tobacco and alcohol, holiday travel and accommodation in Australia, mortgage interest charges and hospital and medical services, automotive fuel, fresh fruit and vegetables, and motor vehicles

The increase in the CPI from December 1994 to December 1995 was 4.8%.

Contributing most to the annual increase were housing (up 9.8%); transportation (up 5.0%); food (up 3.9%); tobacco and alcohol (up 7.1%); health and personal care (up 6.9%) and recreation and education (up 4.0%).

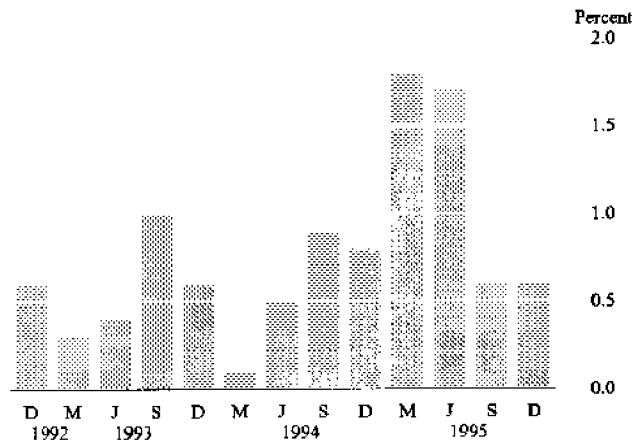
4.2 CONSUMER PRICE INDEX: PERTH

Period	Food	Clothing	Housing	Household equipment and operation	Transportation
(Base of each index: Year 1989-90 = 100.0)					
1992-93	108.8	108.6	87.9	107.4	111.2
1993-94	110.0	108.2	87.3	108.2	114.4
1994-95	113.4	107.4	94.0	109.0	119.0
1994					
Jun qtr	109.9	108.5	87.8	107.9	116.0
Sep qtr	111.6	107.9	88.5	108.3	117.9
Dec qtr	111.4	107.4	91.8	109.0	117.2
1995					
Mar qtr	115.1	106.9	96.9	108.9	119.3
Jun qtr	115.7	107.5	99.0	110.0	121.4
Sep qtr	116.6	106.9	100.0	110.5	123.4
Dec qtr	115.8	107.3	100.8	110.9	123.1

Period	Tobacco and alcohol	Health and personal care	Recreation and education	All groups
(Base of each index: Year 1989-90 = 100.0)				
1992-93	114.0	119.8	106.7	106.2
1993-94	128.8	123.8	107.6	108.5
1994-95	136.8	130.4	109.6	112.3
1994				
Jun qtr	131.8	125.5	107.5	109.1
Sep qtr	133.6	127.6	107.7	110.1
Dec qtr	135.9	128.4	109.4	111.0
1995				
Mar qtr	137.7	130.1	109.0	113.0
Jun qtr	140.2	135.7	112.3	114.9
Sep qtr	140.6	135.7	112.1	115.6
Dec qtr	145.6	137.2	113.8	116.3

Reference: Consumer Price Index (6401.0)

CPI ALL GROUPS: PERTH
Percentage change from previous quarter



Analysis of Table 5.1

The number of houses approved in February 1996 increased by 34.8% when compared with January 1996 and decreased by 6.7% when compared with February 1995. The number of total dwelling units approved in February 1996 increased by 19.4% when compared with January 1996 and decreased by 6.6% when compared with February 1995.

The Building Approvals trend series for houses recorded a low of 1,005 in October 1995 and since that time has risen to a level of 1,046 in February 1996.

For more information about this table, call Peter Hodgson on (09) 360 5180

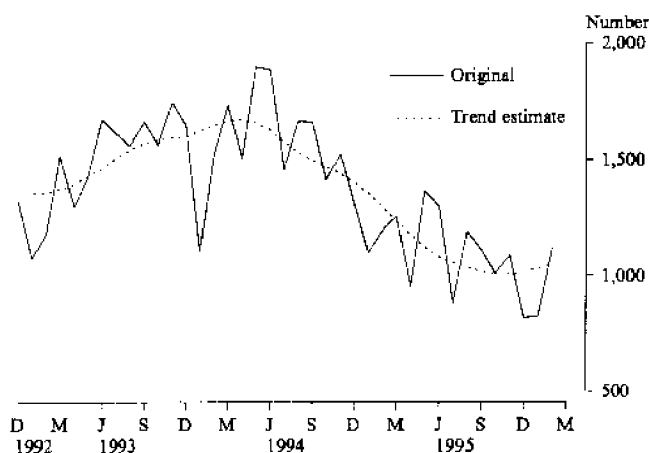
5.1 NEW RESIDENTIAL BUILDING APPROVED

Period	Houses		Other Residential Buildings		Total ¹	
	Dwelling Units	Value	Dwelling Units	Value	Dwelling Units	Value
	Number	\$m	Number	\$m	Number	\$m
Financial years						
1992-93	16 485	1 173.7	5 994	345.7	22 568	1 519.4
1993-94	19 437	1 503.7	7 144	461.0	26 776	1 964.7
1994-95	18 207	1 354.3	6 105	420.3	22 427	1 774.6
Months						
Dec 94	1 314	110.1	526	33.3	1 856	143.4
Jan 95	1 100	90.6	431	26.8	1 535	116.4
Feb 95	1 195	102.0	383	26.8	1 588	129.0
Mar 95	1 258	111.0	496	39.0	1 761	150.4
Apr 95	952	81.7	222	16.1	1 180	97.9
May 95	1 367	115.2	426	35.7	1 794	151.0
Jun 95	1 301	109.0	491	35.3	1 795	144.3
Jul 95	883	77.8	316	23.1	1 203	100.9
Aug 95	1 189	104.8	399	30.6	1 596	135.4
Sep 95	1 111	99.2	293	22.9	1 410	122.1
Oct 95	1 008	96.6	253	20.4	1 265	117.0
Nov 95	1 087	99.1	286	22.7	1 378	121.8
Dec 95	819	79.5	170	12.9	995	92.4
Jan 96	827	82.5	410	33.2	1 241	115.7
Feb 96	1 115	105.1	342	25.5	1 482	130.6

¹ Includes conversions

Reference: Building Approvals, Western Australia (8731.5)

NEW HOUSES APPROVED
WESTERN AUSTRALIA



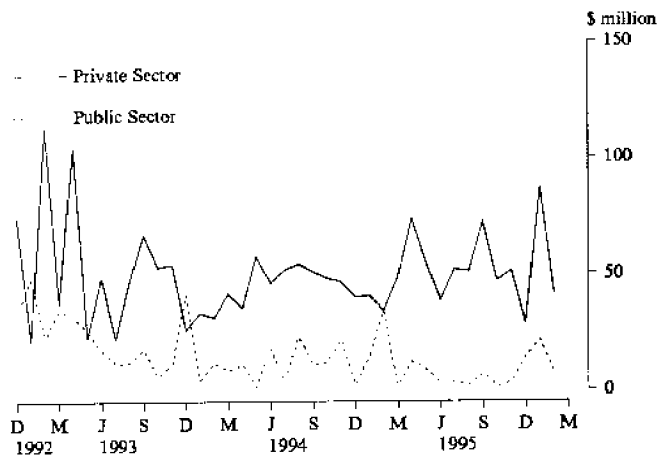
Source: Building Approvals, Western Australia (8731.5)

5.2 NON-RESIDENTIAL BUILDING APPROVED

Period	Private	Public	Total
(\$ million)			
Financial years			
1992-93	591.3	298.3	889.6
1993-94	513.1	153.9	667.0
1994-95	580.9	147.3	728.2
Months			
Dec 94	39.9	2.1	42.0
Jan 95	40.5	14.3	54.8
Feb 95	34.2	34.1	68.0
Mar 95	48.2	1.9	50.1
Apr 95	73.6	12.2	85.8
May 95	54.7	8.6	63.3
Jun 95	38.5	3.1	41.6
Jul 95	51.9	3.2	55.1
Aug 95	51.0	2.2	53.2
Sep 95	72.2	6.8	79.0
Oct 95	47.1	1.4	48.5
Nov 95	51.2	3.4	54.7
Dec 95	28.7	14.2	42.9
Jan 96	86.9	21.3	108.2
Feb 96	41.3	7.3	48.6

Reference: Building Approvals, Western Australia (8731.5)

NON-RESIDENTIAL BUILDING APPROVED
WESTERN AUSTRALIA

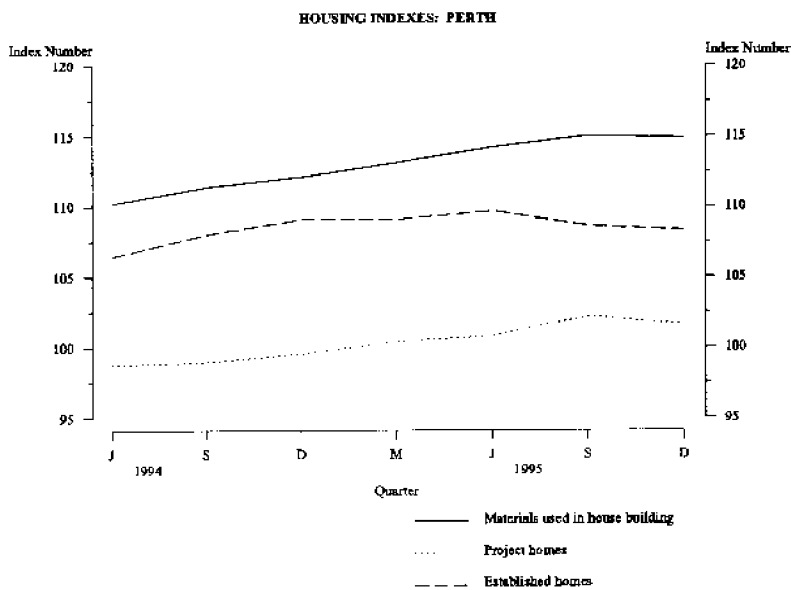


Source: Building Approvals, Western Australia (8731.5)

5.3 SELECTED HOUSING PRICE INDEXES: PERTH

Period	Materials used in house building	Project homes	Established homes
(Base of each index: 1989-90 = 100.0)			
1992-93	106.9	92.8	98.4
1993-94	109.1	96.2	104.7
1994-95	112.7	100.0	109.0
1994			
Sep qtr	111.4	99.0	108.0
Dec qtr	112.1	100.0	109.1
1995			
Mar qtr	113.1	100.4	109.1
Jun qtr	114.2	100.8	109.7
Sep qtr	115.0	102.2	108.6
Dec qtr	114.9	101.6	108.3

References: Price Index of Materials Used in House Building (6408.0); House Price Indexes, (6416.0)

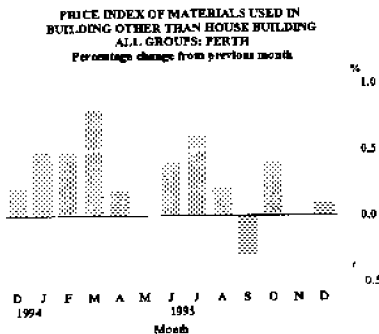


5.4 PRICE INDEX OF MATERIALS USED IN BUILDING OTHER THAN HOUSE BUILDING: PERTH

Period	All groups	Special Combinations of Building Materials		
		Electrical materials	Mechanical services	Plumbing materials
(Base of each index 1989-90 = 100)				
1992-93	105.7	105.7	103.7	103.7
1993-94	107.1	101.9	104.2	105.1
1994-95	110.1	107.3	106.8	114.4
1994				
December	109.5	107.7	105.8	115.0
1995				
January	110.0	109.1	106.1	115.3
February	110.5	109.4	107.3	115.3
March	111.4	109.4	108.5	115.5
April	111.6	110.2	109.0	115.3
May	111.6	110.2	108.9	116.8
June	112.0	112.0	109.3	118.7
July	112.7	112.6	109.9	120.4
August	112.9	113.1	109.8	121.0
September	112.6	113.2	109.8	119.9
October	113.1	112.9	111.5	120.7
November p	113.1	112.6	112.1	120.0
December p	113.2	112.6	112.3	119.8
January p	113.3	112.5	112.4	120.0
February p	113.4	112.5	112.9	120.0

Period	Selected Major Building Materials				
	Structural timber	Clay bricks	Ready mixed concrete	Structural steel	Aluminium windows
(Base of each index 1989-90 = 100)					
1992-93	102.7	111.3	115.5	96.3	103.8
1993-94	110.6	113.9	116.6	100.4	104.4
1994-95	110.6	118.0	117.8	103.6	112.4
1994					
December	109.7	117.8	117.3	103.4	109.4
1995					
January	109.8	117.8	117.3	103.7	112.3
February	109.7	117.8	117.2	103.7	112.3
March	109.7	117.8	117.5	103.7	118.2
April	109.8	117.8	117.5	103.7	118.2
May	110.0	120.2	115.9	103.8	118.2
June	109.9	120.2	116.0	103.8	118.2
July	109.9	120.2	116.0	105.7	118.2
August	109.7	120.2	117.8	106.0	118.2
September	109.7	120.2	115.0	105.9	118.2
October	109.6	120.2	115.0	106.9	118.2
November	109.8	120.2	114.6	107.3	118.2
November p	109.8	120.2	114.6	107.3	118.2
December p	109.6	120.2	114.4	107.7	118.2
January p	109.2	120.2	114.4	108.2	118.2
February p	109.1	120.2	114.1	108.2	118.2

Reference: Price Index of Materials Used in Building Other Than House Building (6407.0)



6.3 WOOL RECEIVALS¹ and LIVE SHEEP EXPORTS

Period	Receivals of taxable wool by brokers and dealers		Export of live sheep		
			Number	Gross Value	Unit Value
	bales	tonnes	'000	\$'000	\$
Financial years					
1992-93	1 115 307	198 756	3 681.0	89 079	24.20
1993-94	1 196 990	212 670	4 520.9	127 448	28.19
1994-95	972 837	172 575	3 780.7	125 101	33.09
Months					
Jan 95	59 841	10 640	376.4	12 608	33.49
Feb 95	84 274	15 167	345.2	11 816	34.23
Mar 95	90 219	16 114	336.7	11 016	32.72
Apr 95 r	53 151	9 478	496.7	17 622	35.49
May 95	39 129	6 883	282.1	10 428	36.97
Jun 95	30 142	5 333	179.3	6 855	38.22
Jul 95	53 823 r	9 632 r	515.6	21 397	41.50
Aug 95	125 250 r	22 416 r	418.9 r	17 363 r	41.45 r
Sep 95	110 916 r	19 675 r	415.7 r	16 628 r	40.01 r
Oct 95	118 670	21 125	277.6 r	10 238 r	36.88 r
Nov 95	87 159 r	15 520 r	281.9 r	9 918 r	35.17 r
Dec 95	38 394	6 788	341.6 r	13 677 r	40.04 r
Jan 96	n.y.a.	11 147	354.2	13 921	39.30
Feb 96	n.y.a.	16 850	337.2	12 445	36.90

¹ Source: National Council of Wool Selling Brokers

Reference: FTRACCS Trade Statistics

For more information regarding these tables, please contact Pam Prince on (09) 360 5207

6.4 ENERGY PRODUCTION

Period	Coal ¹	Electricity generated	Gas for distribution ²	Crude oil ^{3,4}	Natural gas ⁴
	'000 tonnes	million kWh	million MJ	mega-litres	million m ³
Financial years					
1991-92	5 491	14 626	149 534	7 350	10 496
1992-93	5 428	15 007	156 349	6 693	11 923
1993-94	5 151	15 755	172 432	7 639	13 659
Months					
Feb 95	503	1 387	12 900		
Mar 95	555	1 465	13 878	2 918	4 048
Apr 95	580	1 351	13 951		
May 95	518	1 423	14 466		
Jun 95	547	1 389	14 865	3 210	3 682
Jul 95	391	1 447	15 564		
Aug 95	368	1 455	15 474		
Sep 95	567	1 370	14 543	3 421	4 396
Oct 95	496	1 399	15 441		
Nov 95	455	1 394	14 709		
Dec 95	613	1 477	14 416	2 740	4 253
Jan 96	505	1 537	15 635		
Feb 96	445	1 532	15 707		

¹ Source: Department of Minerals and Energy.

² Available for issue through mains.

³ Includes condensate.

⁴ Source: Australian Bureau of Agricultural and Resource Economics.

Analysis of Table 6.5

Overall mineral exploration expenditure for the September Quarter showed a return to normal levels of activity after the influence of the variations seen in the gold sector during the March and June Quarters.

For more information regarding these tables, please contact Pam Prince on (09) 360 5207.

6.5 MINERAL EXPLORATION: EXPENDITURE BY TYPE OF MINERAL SOUGHT

Period	Metallic Minerals			Non-Metallic Minerals		Total minerals
	Base metals ¹	Gold	Other	Diamonds	Other	
	(\$ million)					
Financial years						
1992-93	60.0	221.2	35.0	29.0	2.9	348.1
1993-94	63.3	310.2	31.5	46.6	2.1	453.7
1994-95	58.8	379.4	17.9	35.2	5.6	496.5
Quarters						
Sep 94	13.0	94.3	5.5	14.0	0.7	127.5
Dec 94	14.5	97.4	4.9	9.4	0.3	126.4
Mar 95	17.2	79.5	3.4	5.1	0.6	106.3
June 95	14.1	108.2	4.0	5.8	0.6	135.3
Sep 95	16.6	90.4	4.5	9.7	2.4	124.9
Dec 95	n.y.a	n.y.a	n.a	n.a	n.a	n.y.a

¹ Includes copper, lead, zinc, silver, nickel and cobalt.

Reference: Actual and Expected Private Mineral Exploration Expenditure, Australia (8412.0)

6.6 MINERAL PRODUCTION

Period	Iron ore	Bauxite	Gold	Ilmenite	Nickel	Diamonds
	'000 tonnes	'000 tonnes	kg	'000 tonnes	'000 tonnes	'000 carats
Financial years						
1992-93	112 259	26 681	179 615	1 706	64	42 199
1993-94	119 690 r	27 087	193 599	1 612	62 r	39 909
1994-95	132 742 r	26 852	187 609 r	1 631 r	94	43 591
Quarters						
Sep 94	32 781	6 706	47 095	410	19	12 864
Dec 94	32 958	6 761	47 789	400 r	23	11 292
Mar 95	32 265	6 657	45 396 r	388 r	25	10 111
Jun 95	34 738 r	6 729	47 329 r	433 r	27	9 324
Sep 95	36 459	7 451	49 050 r	500 r	25	9 105 r
Dec 95	35 213	7 028	49 150	477	24	12 153

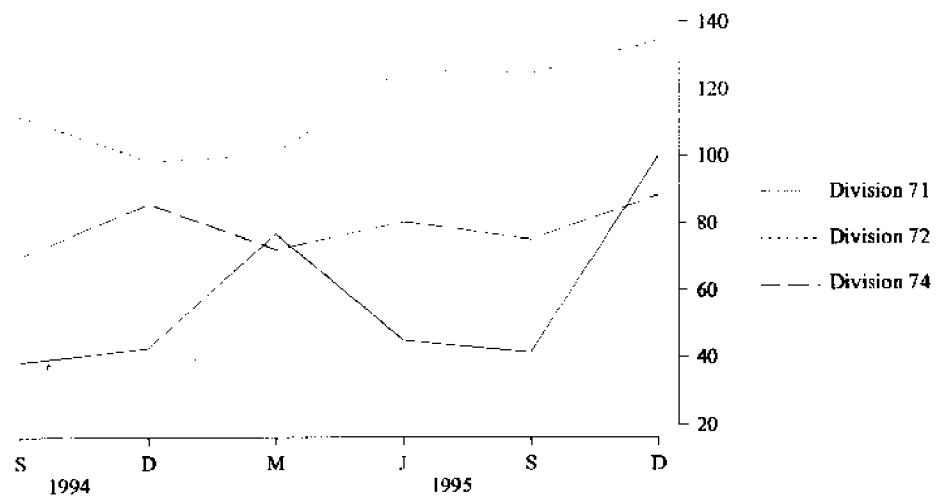
Source: Australian Bureau of Agricultural and Resource Economics

7.1 IMPORTS BY SELECTED DIVISION

Period	33 Petroleum, petroleum products, etc	71 Power generating equipment and machinery	72 Machinery specialised for particular industries	74 General industrial machinery and equipment	78 Road vehicles
(\$ million)					
Financial years					
1992-93	912.0	172.0	650.2	215.2	538.3
1993-94	678.4	189.7	432.2	254.0	690.0
1994-95	823.8	203.1	436.9	308.7	802.1
Quarters					
Sep 94	207.9	38.4	111.6	70.1	168.8
Dec 94	176.0	42.7	98.7	85.9	223.5
Mar 95	187.8	77.0	100.8	72.3	158.1
Jun 95	252.1	45.0	125.8	80.4	251.6
Sep 95	185.3	41.4	124.7	75.2	212.6
Dec 95	186.2	99.9	134.5	88.4	212.8

Reference: FTRACCS Trade Statistics

IMPORTS BY SELECTED DIVISION



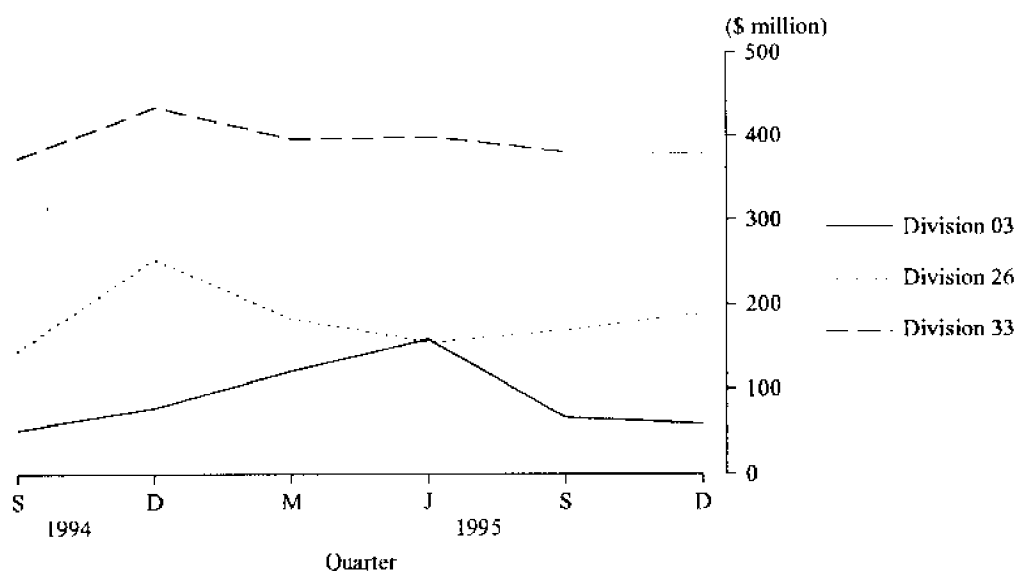
Source: FTRACCS Trade Statistics

7.2 EXPORTS BY SELECTED DIVISIONS

Period	03 Fish, crustaceans, molluscs, etc	04 Cereals and cereal preparations	26 Textile fibres and waste (excluding yam or fabric)	28 Metalliferous ores and metal scrap	33 Petroleum, petroleum products etc.
(\$ million)					
Financial years					
1992-93	359.0	1 294.9	611.4	3 261.1	967.0
1993-94	413.3	1 150.1	656.1	2 999.4	882.9
1994-95	408.6	1 154.3	733.8	3 094.0	1 544.4
Quarters					
Sep 94	51.9	255.5	144.5	723.2	372.3
Dec 94	77.4	292.0	252.6	727.9	434.2
Mar 95	120.7	323.4	182.0	752.4	396.4
Jun 95	158.7	283.4	154.1	890.6	398.8
Sep 95	66.1	286.5	169.0	827.8	379.8
Dec 95	58.9	497.9	189.6	815.0	377.3

Reference: FTRACCS Trade Statistics

EXPORTS BY SELECTED DIVISIONS



Source: FTRACCS Trade Statistics

Analysis of Table 8.1

New Motor Vehicle Registrations for February 1996 showed a considerable increase in comparison with low registrations recorded for January 1996.

For more information regarding these tables, please contact Cheryl Smith on (09) 360 5242

8.1 NEW MOTOR VEHICLE REGISTRATIONS¹

Period	Western Australia					Perth Statistical Division
	Passenger vehicles	Light commercial vehicles	Trucks and buses	Motor cycles and scooters	Total	
Financial years						
1992-93	45 567	9 581	1 975	2 117	59 240	46 593
1993-94	48 589	10 350	2 136	2 103	63 178	49 074
1994-95	51 947	10 782	2 170	2 344	67 243	52 168
Months						
Jan 95	4 047	803	166	207	5 223	3 950
Feb 95	3 933	906	171	176	5 189	3 989
Mar 95	4 434	1 006	153	217	5 810	4 597
Apr 95	3 400	785	173	150	4 508	3 332
May 95	5 046	1 076	205	173	6 500	5 040
Jun 95	5 025	1 258	248	159	6 690	4 984
Jul 95	3 704	789	198	156	4 827	3 635
Aug 95	4 395	771	235	192	5 593	4 405
Sep 95	4 021	738	209	187	5 155	4 119
Oct 95	4 111	812	175	201	5 299	4 136
Nov 95	4 595	945	247	365	6 148	4 887
Dec 95	4 308	884	207	209	5 608	4 249
Jan 96	3 178	692	140	174	4 184	3 041
Feb 96	4 516	1 090	158	170	5 934	4 472

¹ Excludes plant and equipment, caravans and trailers
Reference: Unpublished statistics

Analysis of Table 8.2

The trend estimate figures for February 1996 remained constant despite a decrease in original registrations in January 1996.

For more information regarding these tables, please contact Cheryl Smith on (09) 360 5242

8.2 VEHICLE REGISTRATION STATISTICS¹

Period	Passenger Vehicles		Other Vehicles		Total	
	Original	Trend estimate	Original	Trend estimate	Original	Trend estimate
Months						
Jan 95	4 047	4 292	969	1 079	5 016	5 371
Feb 95	3 933	4 306	1 077	1 081	5 010	5 387
Mar 95	4 434	4 341	1 159	1 087	5 593	5 428
Apr 95	3 400	4 376	958	1 099	4 358	5 475
May 95	5 046	4 381	1 281	1 110	6 327	5 491
Jun 95	5 025	4 340	1 270	1 114	6 531	5 454
Jul 95	3 704	4 284	967	1 108	4 671	5 392
Aug 95	4 395	4 213 r	1 006	1 090 r	5 401	5 303 r
Sep 95	4 021	4 139 r	947	1 067 r	4 968	5 206 r
Oct 95	4 111	4 101 r	987	1 054 r	5 098	5 155 r
Nov 95	4 595	4 106 r	1 192	1 058 r	5 787	5 164 r
Dec 95	4 308	4 111 r	1 091	1 074 r	5 399	5 185 r
Jan 96	3 178	4 118 r	832	1 097 r	4 010	5 215 r
Feb 96	4 516	4 118	1 248	1 122	5 764	5 240

¹ Other vehicles excludes motor cycles, plant and equipment, caravans and trailers.
Reference: Unpublished statistics

9.1 PRIVATE NEW CAPITAL EXPENDITURE BY SELECTED INDUSTRY GROUPS (ORIGINAL SERIES)

Period	Selected Industry			Total	Seasonally adjusted
	Mining	Manu- facturing	Other selected industries	Original	
(\$ million)					
Financial Years					
1993-94	3 624	517	1 813	5 954	5 923
1994-95	4 046	595	2 216	6 857	6 819
Quarters					
Sep 94	840	98	383	1 321	1 341
Dec 94	1 172	154	894	2 220	1 950
Mar 95	1 007	133	452	1 592	1 770
Jun 95	1 027	209	487	1 724	1 757
Sep 95	1 041	205	577	1 823	1 877
Dec 95	1 163	176	766	2 106	1 828

Reference: State Estimates of Private New Capital Expenditure (5646.0)

9.2 STATE FINAL DEMAND AND PRODUCTION ACCOUNT TREND DATA AT CURRENT PRICES

Period	Wages salaries and supplements	Gross operating surplus	Indirect taxes less subsidies	GSP (income based)
(\$ million)				
Quarters				
Mar 93	4 606	4 916	1 073	10 595
Jun 93	4 751	4 914	1 105	10 770
Sep 93	4 884	4 846	1 134	10 864
Dec 93	4 979	4 843	1 178	11 000
Mar 94	5 030	4 994	1 241	11 265
Jun 94	5 061	5 187	1 312	11 560
Sep 94	5 101	5 289	1 351	11 741
Dec 94	5 185	5 314	1 356	11 855
Mar 95	5 300	5 394	1 355	12 049
Jun 95	5 394	5 513	1 369	12 276
Sep 95	5 463	5 645	1 391	12 499

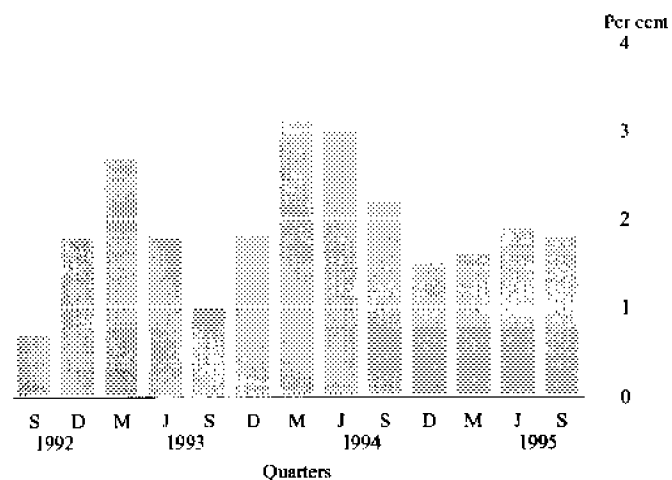
Reference: State Accounts (5242.0)

Analysis of Table 9.2

GSP grew 1.8% in the September quarter, to be 6.5% higher than in September quarter 1994. Growth in wages, salaries and supplements was lower than in recent quarters, rising 1.3% in the September quarter, following an increase of 1.8% in June quarter 1995. Indirect taxes less subsidies grew 1.6% in the September quarter, after falling 0.1% in March quarter 1995 and rising 1.0% in June quarter 1995.

For more information about this table, call Vic Nowotny (09) 360 5333

PERCENTAGE CHANGE IN GSP(A) - TREND
WESTERN AUSTRALIA



(A) Gross State Product at current prices
Source: State Accounts 5242.0

10.1 STATISTICAL SUMMARY

Indicator	Period	Unit	Western Australia				
			Current Australian figure	Current figure	Change from last period(%)	Figure one year ago	Change from one year ago (%)
POPULATION							
Estimated resident population	Jun qtr 95 p	'000	18 054.0	1 731.7	0.4	1 701.1	1.8
Natural increase	Jun qtr 95 p	No.	34 193	3 757	-8.5	3 618	3.8
Net estimated migration gain	Jun qtr 95 p	No.	19 332	3 728	-35.5	2 179	71.1
TOURISM							
<i>Hotels and motels, etc with facilities</i>							
Guest arrivals	Dec qtr 95	'000	7 964.4	594.9	1.0	579.3	2.7
Guest rooms available	Dec qtr 95	No.	169 630	14 924	1.4	14 734	1.3
Room occupancy rates	Dec qtr 95	%	59.7	62.2	1.8	61.2	1.6
<i>Overseas visitors</i>							
Long-term Arrivals	Dec qtr 95	No.	13 300	1 440	-45.5	1 160	24.1
Short-term Arrivals	Dec qtr 95	No.	1 085 800	110 800	49.7	106 200	4.3
<i>Resident Departures</i>							
Long-term Departures	Dec qtr 95	No.	14 600	1 610	-8.5	1 590	1.3
Short-term Departures	Dec qtr 95	No.	674 700	81 200	-1.9	76 900	5.6
EMPLOYMENT							
Employed persons (Trend)	Mar96	'000	8 321.8	830.9	0.1	826.4	0.5
<i>Unemployed persons</i>							
Looking for work (Original)	Mar 96	'000	810.9	74.0	-6.2	69.5	6.5
Looking for work (Trend)	Mar96	'000	765.9	70.9	0.3	66.8	6.1
<i>Participation rate</i>							
Original	Mar96	%	63.8	66.4	-0.4	67.0	-0.9
Trend	Mar 96	%	63.6	66.2	0.0	67.0	-1.2
<i>Unemployment rate</i>							
Original	Mar 96	%	8.9	8.2	-5.7	7.8	5.1
Trend	Mar 96	%	8.4	7.9	1.3	7.5	5.3
<i>Full-time adult average weekly earnings</i>							
Males	Nov 95	\$	761.60	792.20	2.1	758.00	4.5
Females	Nov 95	\$	596.00	574.40	1.0	538.40	6.7
Persons	Nov 95	\$	702.90	713.10	1.5	676.90	5.4
All employees total earnings	Nov 95	\$	554.30	548.40	0.7	538.80	1.8
<i>Average weekly overtime hours</i>							
Per employee	Nov 95	hours	1.1	1.3	4.3	1.7	-21.3
Per employee working overtime	Nov 95	hours	6.9	8.2	2.4	8.5	-4.5
Employees working overtime	Nov 95	%	16.6	16.4	1.8	19.9	-17.6
<i>Industrial disputes in progress (working days lost)</i>							
Total	Dec95	'000	10.2	0.2	-87.5	4.4	-95.4
Per '000 employees year ended	Dec95	days	79.0	150.0	-4.5	42.0	257.1
RETAIL							
<i>Monthly Retail Turnover</i>							
Original	Feb 96	\$m	9 340.6	962.1	-6.3	839.8	14.6
Trend estimate	Feb 96	\$m	10 159.6	1 045.1	0.3	948.8	10.1
Consumer Price Index	Dec 95	Index No.	118.5	116.3	0.6	111.0	4.8

10.1 STATISTICAL SUMMARY continued

Indicator	Period	Unit	Western Australia		Change from last period (%)	Figure one year ago	Change from one year ago (%)
			Current Australian figure	Current figure			
CONSTRUCTION							
<i>Building Approvals</i>							
Dwelling Units	Feb 96	No.	10 109	1 482	19.4	1 586	-6.6
Value of all building	Feb 96	\$m	2 217.4	191.6	-18.9	209.6	-8.6
<i>Building Commencements</i>							
Dwelling Units	Jun qtr 95	No.	35 647	4 642	-5.1	6 744	-31.2
Value of all building	Jun qtr 95	\$m	6 040.6	653.2	5.8	731.4	-10.7
<i>Total Building</i>							
Value of work done during	Jun qtr 95	\$m	5 995.1	669.7	-3.8	750.9	-10.8
Value of work yet to be done	Jun qtr 95	\$m	7 916.6	642.2	-0.7	734.9	-12.6
<i>Engineering Construction</i>							
Value of work commenced	Sep qtr 95	\$m	5 076.4	947.4	93.5	365.6	159.0
Value of work done during	Sep qtr 95	\$m	3 312.7	511.3	7.0	341.4	50.0
Value of work yet to be done	Sep qtr 95	\$m	6 315.4	1 177.8	11.9	775.7	51.9
<i>Housing Price Indexes</i>							
Materials used in house building	Dec qtr 95	Index No.	115.7	114.9	-0.1	112.1	2.5
Established houses	Dec qtr 95	Index No.	112.4	108.3	-0.3	109.1	-0.7
Project Homes	Dec qtr 95	Index No.	109.4	101.6	-0.6	99.6	2.0
MINERAL EXPLORATION							
Gold	Sep qtr 95	\$m	128.5	90.4	-16.4	94.3	-4.1
Other minerals	Sep qtr 95	\$m	94.4	34.5	27.3	33.2	3.9
OVERSEAS TRADE							
Imports	Feb 96	\$m	6 204.5	559.8	7.0	438.4	27.7
Exports	Feb 96	\$m	5 667.2	1 529.9	-5.0	1 280.5	19.5
TRANSPORT							
<i>Passenger vehicle registrations</i>							
Original	Feb 96	No.	44 659	4 516	42.1	3 933	14.8
Trend	Feb 96	No.	44 872	4 118	3.8	4 306	-4.3
<i>Total registrations</i>							
Original	Feb 96	No.	53 201	5 764	43.7	5 010	15.0
Trend	Feb 96	No.	53 747	5 240	4.7	5 387	-2.7
FINANCE							
<i>Private New Capital Expenditure</i>							
Original	Dec qtr 95	\$m	9 758	2 106	15.5	2 220	-5.1
Seasonally adjusted	Dec qtr 95	\$m	9 013	1 828	-2.6	1 950	-6.3
<i>Gross State Product (Income based)</i>							
Current prices	Sep qtr 95	\$m	116 382	12 243	4.9	11 689	4.7
State Final Demand at average 1989-90 prices	Sep qtr 95	\$m	103 857	10 333	-2.4	10 122	2.1

For more information...

The ABS publishes a wide range of information on Australia's economic and social conditions. Details of what is available in various publications and other products can be found in the *ABS Catalogue of Publications and Products* which is available from any of our Offices (see below for contact details).

ABS Products and Services

Many standard products are available from ABS Bookshops located in each State and Territory. In addition to these products, information tailored to special needs of clients or in-depth data investigations can be obtained on a wide range of media by contacting the ABS Information Consultancy Services in your nearest ABS office.

National Dial-a-Statistic Line

0055 86 400

(Steadycom P/L premium rate 25c/21.4 secs.)

This number gives 24 hours access, 365 days a year for a range of important economic statistics, including the CPI.

Internet

<http://www.statistics.gov.au>

A wide range of ABS information is available via the Internet, with basic statistics available for each State, Territory and Australia. We also have Key National Indicators, ABS product release details and other information of general interest.

Bookshops and Subscriptions

There are now over 500 titles available from the ABS Bookshops in each of our Offices. The ABS also provides a subscription mailing service through which nominated publications are provided by mail at no additional cost. (Telephone Publications Subscription Service toll free on 008 02 0608 Australia wide).

Sales and Inquiries

Regional Offices	Information Enquiries	Bookshop Sales
SYDNEY	(02) 268 4611	268 4620
MELBOURNE	(03) 9615 7000	9615 7829
BRISBANE	(07) 3222 6531	3222 6350
PERTH	(09) 360 5140	360 5140
ADELAIDE	(08) 237 7100	237 7582
HOBART	(002) 20 5800	20 5800
CANBERRA	(06) 207 0326	207 0326
DARWIN	(089) 43 2111	43 2111
National Office		
ACT	(06)252 6007	008 020 608



**Information Services, Exchange Plaza,
2 The Esplanade, Perth WA 6000.
or any ABS Office**



© Commonwealth of Australia 1996

Recommended retail price: \$15.00



2130550004963
ISSN 0727-2367